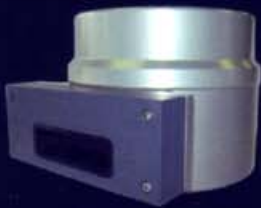


REDEFINING IMAGE CLARITY

The Imagenex Delta T
Multibeam Sonar



300 m*
120° x 3°



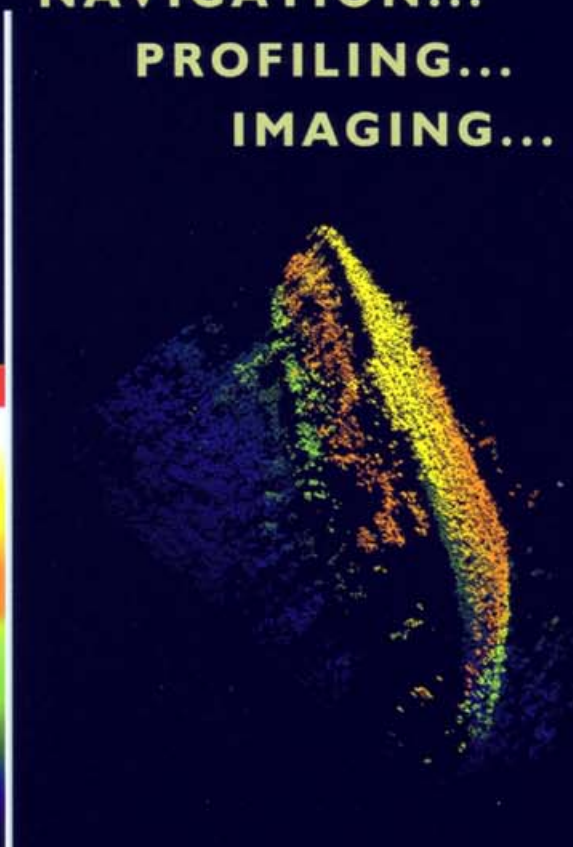
2000 m*
120° x 20°



6000 m*
120° x 3°

HARBOUR SURVEILLANCE...
NAVIGATION...
PROFILING...
IMAGING...

0 M —
4 M —
8 M —
12 M —
16 M —
20 M —
24 M —
28 M —
32 M —
36 M —
40 M —



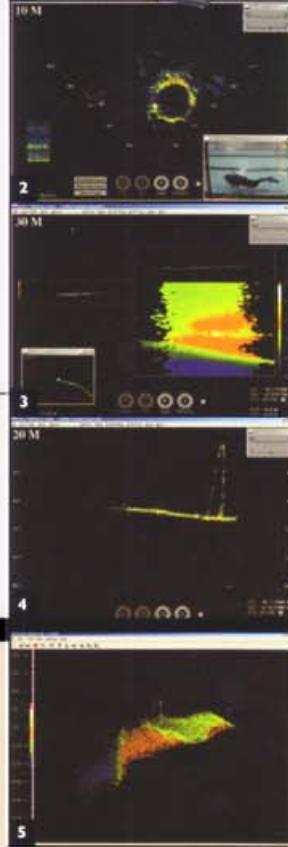
Real-time 3D, raw data image of a World War II wreck
Courtesy of Kjell Almaas of Aalesund, Norway

* Depth Rating

The new Delta T Multibeam Sonar is the
start of the Multibeam revolution!

I
M
A
G
E
N
E
X

At **IMAGENEX**, we think no Sonar feature is more important than **image clarity**. Our design team helped pioneer modern imaging sonar technology, and we continue to lead the way, pushing the **performance** boundaries of our high resolution sonar units. With continuous technological advancements, software and hardware **compatibility**, **portability** and overall ease of use, **IMAGENEX** sonar systems set **the industry standard** as the most **specified** sonar systems **world wide**.



- 1) Laptop
- 2) Diver swimming in a circle with Video Playback
- 3) Hazard marker in 2D Waterfall view with Track Plotter
- 4) Hazard marker in Profile view
- 5) Hazard marker in 3D view

IMAGENEX DELTA T GENERAL SPECIFICATIONS

FEATURES

- Programmable
- High Speed
- Low Power
- Ethernet
- Integrated Video Capture and Display
- Built-in GPS Track Plotter
- 3D Viewing Program

APPLICATIONS

- ROV, AUV, & UUV
- Offshore Oil & Gas
- Sunken Timber Recovery
- Diving Support
- Surveying
- Search & Recovery
- Inspection
- Underwater Archaeology
- Scientific Research

The new Delta T system has been designed from the ground up with the most advanced, high accuracy, low power electronic components available to provide breakthroughs in system power consumption, package size, and price.

This advanced electronics package has built-in flexibility and programmability to accommodate a wide range of transducer arrays.

The Delta T's are a family of new technology products which have imaging, profiling, navigation, and surveillance capabilities to suit your underwater application.

SPECIFICATIONS

FREQUENCY:

120 kHz, 260 kHz, 675 kHz, or 2 MHz

EFFECTIVE BEAM WIDTH:

0.75° (with 600 beams)

BEAMS:

75, 150, 300, 600

RANGE RESOLUTION:

0.2% of range

MINIMUM DETECTABLE RANGE:

0.5 m

MAXIMUM OPERATING DEPTH:

300 m, 2000 m, or 6000 m

FRAME RATE:

Up to 20 fps

INTERFACE TO PC:

10 Mbps Ethernet (10 BASE-T) using TCP/IP

MAXIMUM CABLE LENGTH:

100 m on CAT5e

POWER SUPPLY:

22 - 50 VDC at less than 12 Watts

MATERIALS:

6061-T6 Aluminum, Epoxy, PVC, Stainless Steel connector (6000 m unit has 6AL4V Titanium housing with Polyurethane bumpers)

FINISH:

Hard Anodize

OPERATING MODE:

Surveillance, Navigation, Profiling, or Imaging

FILE FORMAT:

(filename).837, (filename).83P (for profiling), (filename).83B (for beam output)

RECOMMENDED MINIMUM COMPUTER REQUIREMENTS:

2 GHz Pentium 4, 256 MB RAM, 20 GB Hard Disk, 1024 x 768 screen resolution. Windows XP operating system.

For more detailed specifications please visit our website at www.imagenex.com or for your specific needs please contact Imagenex Technology Corp.

Metaldec International
P.O.Box 6020
4780LA, Moerdijk
The Netherlands

Tel: +31-168-327060
Fax: +31-168-324156

E-mail: info@metaldec.nl
Website: www.metaldec.nl

For more information about Imagenex Sonar products, please contact Imagenex Technology Corp. Specifications subject to change without notice. Please contact Imagenex for confirmation.

IMAGENEX TECHNOLOGY CORP.
 #209 1875 Broadway St., Port Coquitlam, BC V3C 4Z1
 Visit our website: www.imagenex.com

Tel: 604 944 8248
Fax: 604 944 8249
 e-mail: imagenex@npsnet.com