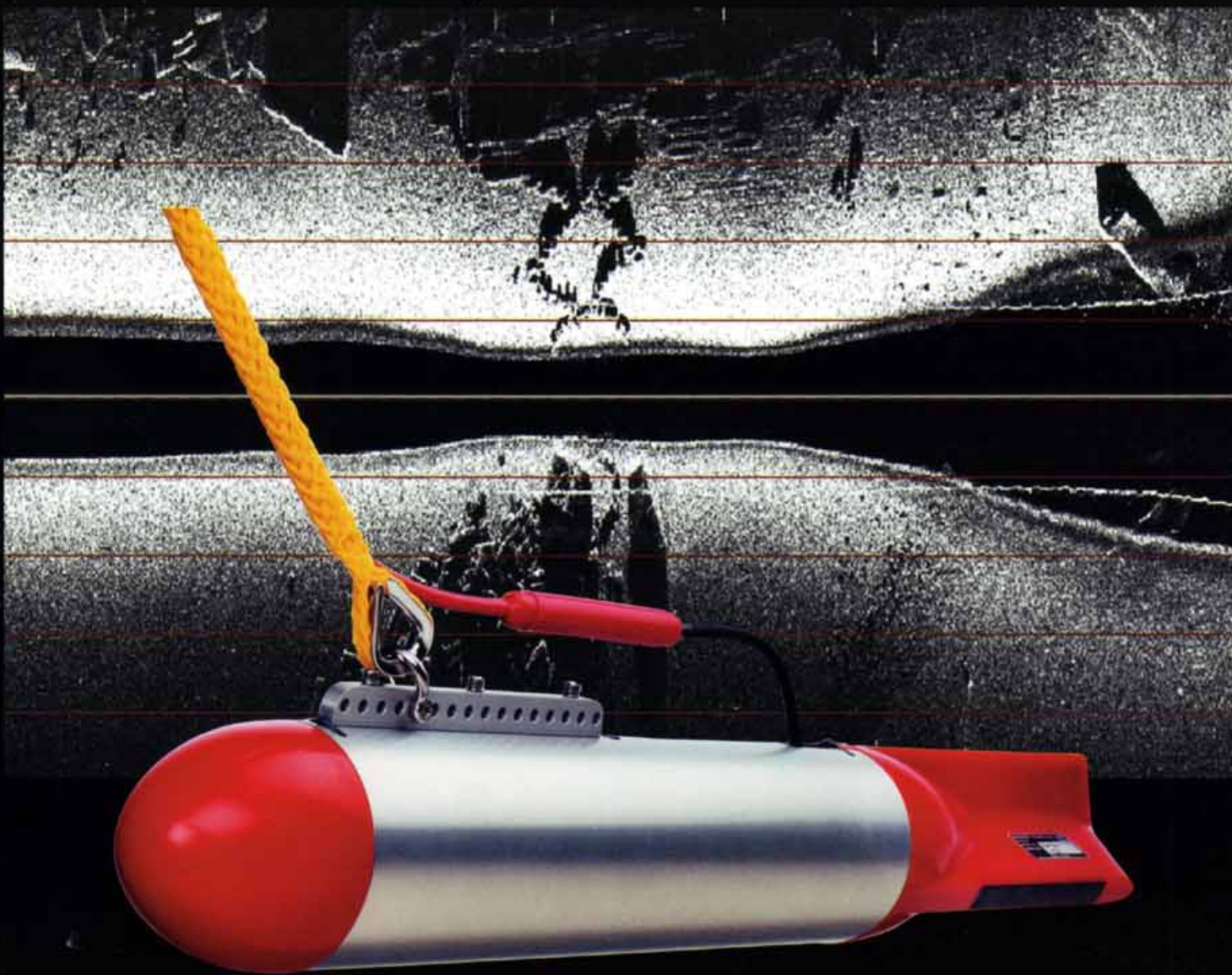


REDEFINING IMAGE CLARITY

**The Imagenex SportScan**  
Digital SideScan Sonar

30 m side scan image of artificial reef at Porteau Cove in British Columbia, Canada - 800 kHz.



The new SportScan sidescan sonar system is a remarkable breakthrough in price and performance!

At **IMAGENEX**, we think no Sonar feature is more important than **image clarity**. Our design team helped pioneer modern imaging sonar technology, and we continue to lead the way, pushing the **performance** boundaries of our high resolution sonar units. With continuous technological advancements, software and hardware **compatibility, portability** and overall ease of use, **IMAGENEX** sonar systems set the industry **standard** as the most **specified** sonar systems **world wide**.



- 1) Laptop
- 2) 4 Conductor 75' Tow Cable
- 3) Nose piece removed
- 4) Weight tray removed
- 5) Standard belt weights fixed to weight tray

**IMAGENEX SPORTSCAN TECHNICAL SPECIFICATIONS**

**FEATURES**

- User Friendly
- Lightweight and Portable
- Inexpensive
- 23m (75') Tow Cable Included
- High Resolution
- Up to 240m (800') Total Coverage
- GPS Interface
- Speed Correction
- Height and Length Measurements
- 4 User Selectable Colour Tables
- XTF Conversion Program (optional)

**APPLICATIONS**

- Underwater Archaeology
- Sunken Timber Recovery
- Search & Recovery
- Surveying
- Law Enforcement Work
- Scientific Research
- Environmental Survey

The new SportScan sidescan sonar system is a remarkable breakthrough in price and performance for sidescan towfishes. This totally digital, full featured system is complete and ready for connection.

Operate the SportScan directly from your laptop or desktop PC. All that is needed is a 12 VDC power source.

Connect a GPS receiver for latitude and longitude coordinates.

**SPECIFICATIONS**

**RECOMMENDED COMPUTER SPECIFICATIONS:**

100 MHz Pentium, 16 MB Ram, 1 GB Hard Disk, 800 x 600 x 256 Colour Graphics. Windows 95, 98, Me, NT, 2000 and XP operating systems.

**FREQUENCY:**

330 kHz or 330/800 kHz

**TRANSDUCER:** One transducer per side, tilted down 20°

**TRANSDUCER BEAM WIDTH:**

330 kHz 1.8° x 60°  
800 kHz 0.7° x 30°

**RANGE:**

15 m, 30 m, 60 m, 90 m, and 120 m

**POWER SUPPLY:**

10 - 16 VDC at 300 mA max.

**INTERFACE:**

RS-232 Serial Interface at 115.2 kbps

**CABLE LENGTH:**

23 m (75') cable included,  
45 m (150') or 60 m (200') optional

**MAXIMUM OPERATING DEPTH:**

30 m (100')

**MATERIALS:**

Polyurethane and 6061-T6 Aluminum

**FINISH:** Clear anodized

**DIMENSIONS:** 114 mm (4.5") diamet x 833 mm (32.8") length

**WEIGHT:** 4.5 kg in air (10 lbs)  
1.2 kg in water (2.7 lbs)

Not including ballast.

**SOME TYPICAL CUSTOMER RESPONSES**

*"We have found that this instrument is very useful and convenient, especially in shallow marine and coastal lagoon surveys."*

*The quality of the sonar images were very impressive for such a small unit. The setup was extremely simple even though we had never had this equipment before."*

**Metaldec International**  
P.O.Box 6020  
4780LA, Moerdijk  
The Netherlands

Tel: +31-168-327060  
Fax: +31-168-324156

E-mail: [info@metaldec.nl](mailto:info@metaldec.nl)  
Website: [www.metaldec.nl](http://www.metaldec.nl)

For more information about Imagenex Sonar products, please contact Imagenex Technology Corp. Specifications subject to change without notice. Please contact Imagenex for confirmation.